



BRITISH  
TRANSPORT  
POLICE

# Statistical Bulletin 2017/18

BRITISH TRANSPORT  
POLICE

- 03 **Introduction**
- 04 **Map of BTP stations**
- 05 **Personnel statistics**
- 07 **Complaints against police officers and staff**
- 08 **Summary of crime**
- 12 **Force total crime**
- 14 **B Division East total crime**
- 16 **B Division South total crime**
- 18 **B Division TfL crime**
- 20 **C Division Midland total crime**
- 22 **C Division Pennine total crime**
- 24 **C Division Wales total crime**
- 26 **C Division Western total crime**
- 28 **D Division Scotland total crime**
- 30 **Miscellaneous statistics**
- 31 **Financial results**

## Introduction

This bulletin contains crime and performance statistics for the year 1 April 2017 to 31 March 2018.

British Transport Police compiles crime statistics for England, Wales and Scotland. In England and Wales these statistics are broken down into geographical areas (Subdivisions) as illustrated on the map on page 4.

The figures collated in this bulletin are for notifiable offences (those which are reportable to the Home Office) for B and C Division (England and Wales), and the equivalent crimes for Scotland which fall in the 12 crime categories given below:

- violence against the person
- sexual offences
- criminal damage
- line of route offences
- theft of passenger property
- motor vehicle/cycle offences
- robbery
- theft of railway property
- public order offences
- fraud offences
- drugs
- other crimes

Crime statistics should be treated with caution. Dramatic fluctuations whether up or down, can be misleading and, if misused, statistics can contribute to the fear of crime. Hundreds of millions of passenger journeys are made safely each year and the statistics should be viewed in that context.

Crime statistics are not always accurate indicators of risk. Police activity to target particular offences, changes in reporting patterns and other factors can affect reported crime figures.

To receive a copy in Welsh  
email [campaigns@btp.pnn.police.uk](mailto:campaigns@btp.pnn.police.uk)  
or telephone 0800 40 50 40

Os hoffech gael y cyhoeddiad hwn yn Gymraeg,  
anfonwch e-bost [campaigns@btp.pnn.police.uk](mailto:campaigns@btp.pnn.police.uk)  
neu ffoniwch 0800 40 50 40

# Map of BTP stations

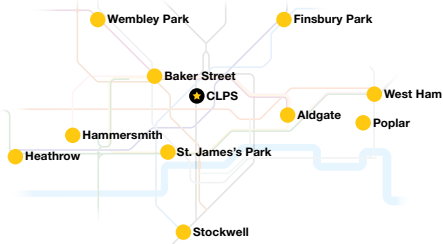
**D Division**  
**D** Scotland

**C Division**  
**P** Pennine  
**M** Midland  
**W** Wales  
**G** Western

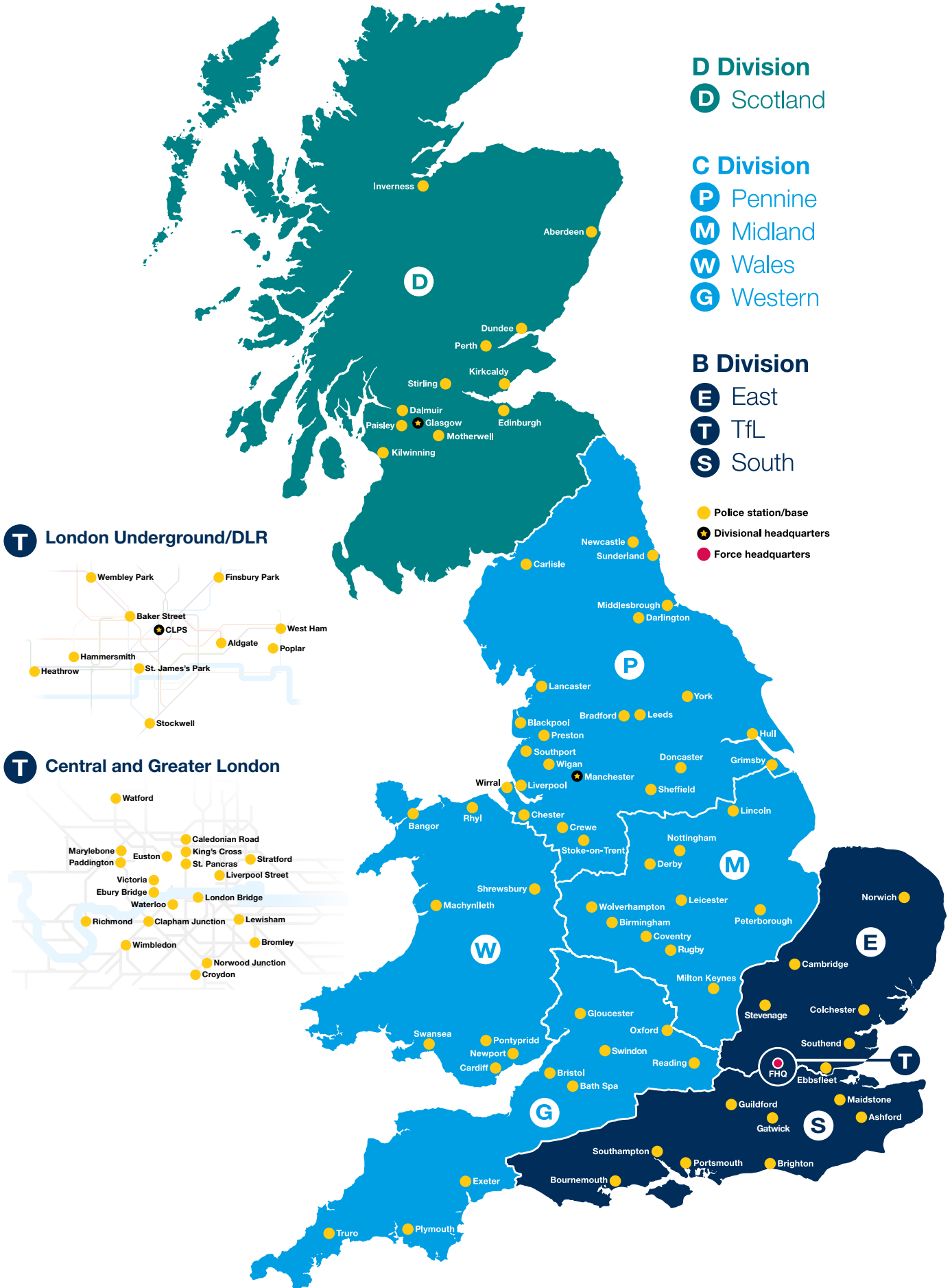
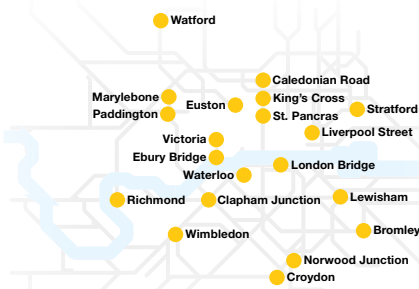
**B Division**  
**E** East  
**T** TfL  
**S** South

● Police station/base  
 ★ Divisional headquarters  
 ● Force headquarters

**T London Underground/DLR**



**T Central and Greater London**



# Personnel statistics

These figures represent a snapshot in time. They were collected on 31 March 2018.

## Number of staff

	Police officers	Police staff (including PCSOs)
2017/18	3,079	1,797
2016/17	2,886	1,877
2015/16	3,069	2,051
2014/15	2,972	1,856
2013/14	2,931	1,853
2012/13	2,880	1,827
2011/12	2,865	1,730
2010/11	2,866	1,703
2009/10	2,914	1,638
2008/09	2,885	1,661
2007/08	2,835	1,455

## Divisional strength

(Not including those on a secondment or career break)

	Police officers	Police staff*	PSCOs	Special constables
A Force Headquarters	487	1,143	0	10
B Division	1,402	214	162	153
C Division	969	125	109	131
D Division	221	44	0	28
<b>Total</b>	<b>3,079</b>	<b>1,526</b>	<b>271</b>	<b>322</b>

## Police officers by rank

	Female	Male	Total
Chief Officers	0	5	5
Chief Superintendent	0	7	7
Superintendent	5	18	23
Chief Inspector	10	36	46
Inspector	33	149	182
Sergeant	59	382	441
Constable	542	1,833	2,375
<b>Total</b>	<b>649</b>	<b>2,430</b>	<b>3,079</b>

\*Excludes agency workers and volunteers

# Personnel statistics

These figures represent a snapshot in time. They were collected on 31 March 2018.

## Police staff and PCSOs by grade

	Female	Male	Total
A001	1	2	3
A002	2	0	2
A003	31	20	51
A004	141	91	232
A005	213	163	376
A006	176	167	343
B001	88	108	196
B002	37	33	70
B003	59	54	113
B004	18	28	46
C001	15	28	43
C002	12	19	31
C003	2	5	7
C004	7	4	11
Director	0	2	2
PCSO	79	192	271
<b>Total</b>	<b>881</b>	<b>916</b>	<b>1,797</b>

## Police starters and leavers

### Police starters

A Force Headquarters	41
B Division	191
C Division	236
D Division	11
<b>Total</b>	<b>479</b>

### Police leavers

Reason	A Force Headquarters	B Division	C Division	D Division
Death	0	2	1	0
Dismissal - Disciplinary	1	3	2	0
Dismissal - Ill Health	2	4	10	2
Retirement	16	46	32	6
Resign	15	68	38	3
Transfer to Other Force	14	15	16	2
<b>Total</b>	<b>48</b>	<b>138</b>	<b>99</b>	<b>13</b>

## Complaints against police officers and staff

	2016/17	2017/18
1 Number of cases received during the year	382	310
2 Number of cases where investigations were completed during the year	409	309
3 Arising from 2, the number of individual allegations	626	546
4 Arising from 3, the numbers:		
a) Locally resolved	93	54
b) Withdrawn, not proceeded with	28	31
c) Dispensed with	0	0
d) Disapplication	5	18
e) Discontinued	2	0
f) Not upheld	416	367
g) Upheld	82	65
Derecorded	0	11

### Formal discipline

	2016/17	2017/18
Dismissal without notice	3	6
Final written warning	5	6
Written warning	6	5
Management advice	13	2
Found not guilty	0	2
Resignation/retirement accepted before disciplinary hearing	13	9
No action	3	0
Not proven	0	4



# Summary of notifiable crimes by Subdivision

Summary of notifiable crimes	2016/17	2017/18	No +/-	% +/-
<b>All crime</b>				
B Division East	9,747	12,197	+2,450	25.14%
B Division South	14,297	16,220	+1,923	13.45%
B Division TfL	11,410	13,399	+1,989	17.43%
C Division Midland	4,202	4,901	+699	16.63%
C Division Pennine	7,611	8,687	+1,076	14.14%
C Division Wales	1,187	1,369	+182	15.33%
C Division Western	2,154	2,595	+441	20.47%
D Division	1,627	1,791	+164	10.08%
<b>Total</b>	<b>52,235</b>	<b>61,159</b>	<b>+8,924</b>	<b>17.08%</b>
<b>Violence against the person</b>				
B Division East	1,573	2,260	+687	43.67%
B Division South	2,386	2,931	+545	22.84%
B Division TfL	2,352	2,942	+590	25.09%
C Division Midland	608	773	+165	27.14%
C Division Pennine	1,386	1,662	+276	19.91%
C Division Wales	214	294	+80	37.38%
C Division Western	306	387	+81	26.47%
D Division	438	462	+24	5.48%
<b>Total</b>	<b>9,263</b>	<b>11,711</b>	<b>+2,448</b>	<b>26.43%</b>
<b>Sexual offences</b>				
B Division East	286	372	+86	30.07%
B Division South	404	504	+100	24.75%
B Division TfL	1,032	1,077	+45	4.36%
C Division Midland	106	122	+16	15.09%
C Division Pennine	167	237	+70	41.92%
C Division Wales	30	32	+2	6.67%
C Division Western	61	71	+10	16.39%
D Division	46	57	+11	23.91%
<b>Total</b>	<b>2,132</b>	<b>2,472</b>	<b>+340</b>	<b>15.95%</b>
<b>Criminal damage</b>				
B Division East	623	823	+200	32.10%
B Division South	1,552	1,948	+396	25.52%
B Division TfL	1,005	982	-23	-2.29%
C Division Midland	370	469	+99	26.76%
C Division Pennine	537	650	+113	21.04%
C Division Wales	104	134	+30	28.85%
C Division Western	129	190	+61	47.29%
D Division	220	314	+94	42.73%
<b>Total</b>	<b>4,540</b>	<b>5,510</b>	<b>+970</b>	<b>21.37%</b>



# Summary of notifiable crimes by Subdivision

Summary of notifiable crimes	2016/17	2017/18	No +/-	% +/-
<b>Line of route offences</b>				
B Division East	207	130	-77	-37.20%
B Division South	278	203	-75	-26.98%
B Division TfL	79	58	-21	-26.58%
C Division Midland	251	143	-108	-43.03%
C Division Pennine	406	326	-80	-19.70%
C Division Wales	87	62	-25	-28.74%
C Division Western	92	48	-44	-47.83%
D Division	85	77	-8	-9.41%
<b>Total</b>	<b>1,485</b>	<b>1,047</b>	<b>-438</b>	<b>-29.49%</b>
<b>Theft of passenger property</b>				
B Division East	2,156	2,515	+359	16.65%
B Division South	2,505	2,245	-260	-10.38%
B Division TfL	3,901	4,878	+977	25.04%
C Division Midland	783	842	+59	7.54%
C Division Pennine	1,522	1,502	-20	-1.31%
C Division Wales	206	199	-7	-3.40%
C Division Western	519	543	+24	4.62%
D Division	252	282	+30	11.90%
<b>Total</b>	<b>11,844</b>	<b>13,006</b>	<b>+1,162</b>	<b>9.81%</b>
<b>Motor vehicle/cycle offences</b>				
B Division East	1,907	2,086	+179	9.39%
B Division South	3,365	3,926	+561	16.67%
B Division TfL	429	361	-68	-15.85%
C Division Midland	898	977	+79	8.80%
C Division Pennine	802	900	+98	12.22%
C Division Wales	133	122	-11	-8.27%
C Division Western	444	589	+145	32.66%
D Division	111	179	+68	61.26%
<b>Total</b>	<b>8,089</b>	<b>9,140</b>	<b>+1,051</b>	<b>12.99%</b>
<b>Robbery</b>				
B Division East	72	124	+52	72.22%
B Division South	102	172	+70	68.63%
B Division TfL	103	161	+58	56.31%
C Division Midland	28	41	+13	46.43%
C Division Pennine	28	34	+6	21.43%
C Division Wales	8	2	-6	-75.00%
C Division Western	3	9	+6	200.00%
D Division	18	10	-8	-44.44%
<b>Total</b>	<b>362</b>	<b>553</b>	<b>+191</b>	<b>52.76%</b>

## Summary of notifiable crimes by Subdivision

Summary of notifiable crimes	2016/17	2017/18	No +/-	% +/-
<b>Theft of railway property</b>				
B Division East	975	1,147	+172	17.64%
B Division South	876	886	+10	1.14%
B Division TfL	171	219	+48	28.07%
C Division Midland	353	461	+108	30.59%
C Division Pennine	1,011	1,170	+159	15.73%
C Division Wales	91	128	+37	40.66%
C Division Western	187	211	+24	12.83%
D Division	224	175	-49	-21.88%
<b>Total</b>	<b>3,888</b>	<b>4,397</b>	<b>+509</b>	<b>13.09%</b>
<b>Public order offences</b>				
B Division East	1,439	2,083	+644	44.75%
B Division South	2,123	2,702	+579	27.27%
B Division TfL	1,884	2,354	+470	24.95%
C Division Midland	544	826	+282	51.84%
C Division Pennine	1,234	1,610	+376	30.47%
C Division Wales	200	308	+108	54.00%
C Division Western	275	400	+125	45.45%
D Division	14	30	+16	114.29%
<b>Total</b>	<b>7,713</b>	<b>10,313</b>	<b>+2,600</b>	<b>33.71%</b>
<b>Fraud offences</b>				
B Division East	65	131	+66	101.54%
B Division South	59	127	+68	115.25%
B Division TfL	131	89	-42	-32.06%
C Division Midland	37	24	-13	-35.14%
C Division Pennine	25	50	+25	100.00%
C Division Wales	8	3	-5	-62.50%
C Division Western	7	11	+4	57.14%
D Division	21	19	-2	-9.52%
<b>Total</b>	<b>353</b>	<b>454</b>	<b>+101</b>	<b>28.61%</b>

## Summary of notifiable crimes by Subdivision

Summary of notifiable crimes	2016/17	2017/18	No +/-	% +/-
<b>Drugs</b>				
B Division East	308	321	+13	4.22%
B Division South	390	355	-35	-8.97%
B Division TfL	253	180	-73	-28.85%
C Division Midland	124	133	+9	7.26%
C Division Pennine	305	386	+81	26.56%
C Division Wales	67	54	-13	-19.40%
C Division Western	74	89	+15	20.27%
D Division	80	96	+16	20.00%
<b>Total</b>	<b>1,601</b>	<b>1,614</b>	<b>+13</b>	<b>0.81%</b>
<b>Other crimes</b>				
B Division East	136	205	+69	50.74%
B Division South	257	221	-36	-14.01%
B Division TfL	70	98	+28	40.00%
C Division Midland	100	90	-10	-10.00%
C Division Pennine	188	160	-28	-14.89%
C Division Wales	39	31	-8	-20.51%
C Division Western	57	47	-10	-17.54%
D Division	118	90	-28	-23.73%
<b>Total</b>	<b>965</b>	<b>942</b>	<b>-23</b>	<b>-2.38%</b>

## Force total crimes

	2016/17	2017/18
	Recorded crimes	Recorded crimes
<b>Violence against the person</b>		
Homicide	7	4
Attempted Murder	9	48
Serious Assault	2,201	2,667
Common Assault	5,907	7,394
Assault on Police	503	637
Firearms/Explosive Offences	25	53
Other Violence	611	908
<b>Total</b>	<b>9,263</b>	<b>11,711</b>
<b>Sexual crime</b>		
Sexual Offences against Females	1,338	1,492
Sexual Offences against Males	72	114
Exposure	185	227
Other sexual crime	537	639
<b>Total</b>	<b>2,132</b>	<b>2,472</b>
<b>Criminal damage/malicious mischief</b>		
Criminal Damage/Malicious Mischief	2,090	2,495
Arson/Fire-raising	74	143
Graffiti	2,360	2,845
Other Criminal Damage	16	27
<b>Total</b>	<b>4,540</b>	<b>5,510</b>
<b>Line of route crime</b>		
Destroy or Damage/Endanger Safety	215	190
Obstruction	1,036	541
Throw Missile at Rail Vehicle	234	316
<b>Total</b>	<b>1,485</b>	<b>1,047</b>
<b>Theft of passenger property</b>		
Theft Luggage	1,035	1,102
Theft Personal Property	6,036	6,296
Theft from the Person	4,773	5,608
<b>Total</b>	<b>11,844</b>	<b>13,006</b>
<b>Motor vehicle/cycle crime</b>		
Theft Motor Vehicle	321	423
Take Vehicle w/o Consent	28	30
Theft from Vehicle	628	651
Damage to Motor Vehicle	609	716
Theft/Damage Pedal Cycle offences	6,458	7,231
Interfere with Motor Vehicle	45	89
<b>Total</b>	<b>8,089</b>	<b>9,140</b>

## Force total crimes

	2016/17	2017/18
	Recorded crimes	Recorded crimes
<b>Robbery</b>		
Robbery	339	522
Assault w/i to Rob	23	31
<b>Total</b>	<b>362</b>	<b>553</b>
<b>Theft of railway/commercial property and burglary</b>		
Burglary/Housebreaking Booking Office	50	47
Burglary-Housebreaking	383	505
Theft from Shop/Kiosk	2,487	2,692
Goods in Transit Offences	24	28
Theft from Vending Machines	199	240
Theft Undertaking Stores	255	252
Live Cable Theft	85	158
Non- Live Cable Theft	172	265
Other Theft/Burglary Offences	233	210
<b>Total</b>	<b>3,888</b>	<b>4,397</b>
<b>Public order</b>		
Public fear, alarm or distress	5,453	7,351
Racially or religiously aggravated public fear, alarm or distress	1,758	2,136
Bomb Hoax Offences	71	83
Other Public Order Offences	431	743
<b>Total</b>	<b>7,713</b>	<b>10,313</b>
<b>Fraud</b>		
Ticket Fraud	2	3
Forgery	64	102
Other Fraud	287	349
<b>Total</b>	<b>353</b>	<b>454</b>
<b>Drug crime</b>		
Trafficking in Controlled Drug	77	91
Possession of Controlled Drug	1,518	1,522
Proceeds of Crime (Drugs)	3	0
Other Drug Offences	3	1
<b>Total</b>	<b>1,601</b>	<b>1,614</b>
<b>Total other notifiable crime/offences</b>		
Handling/Reset	38	60
Other Firearms Offences	2	4
Proceeds of Crime (Exc Drugs)	12	17
Other Theft	383	509
Other Offences	530	352
<b>Total</b>	<b>965</b>	<b>942</b>
<b>Total notifiable crime/offences</b>	<b>52,235</b>	<b>61,159</b>

## B Division East notifiable crimes

	2016/17	2017/18
	Recorded crimes	Recorded crimes
<b>Violence against the person</b>		
Homicide	0	1
Attempted Murder	2	1
Serious Assault	407	494
Common Assault	952	1,366
Assault on Police	104	192
Firearms/Explosive Offences	3	8
Other Violence	105	198
<b>Total</b>	<b>1,573</b>	<b>2,260</b>
<b>Sexual crime</b>		
Sexual Offences against Females	171	222
Sexual Offences against Males	13	18
Exposure	27	21
Other sexual crime	75	111
<b>Total</b>	<b>286</b>	<b>372</b>
<b>Criminal damage/malicious mischief</b>		
Criminal Damage/Malicious Mischief	305	389
Arson/Fire-raising	7	21
Graffiti	310	409
Other Criminal Damage	1	4
<b>Total</b>	<b>623</b>	<b>823</b>
<b>Line of route crime</b>		
Destroy or Damage/Endanger Safety	29	30
Obstruction	154	65
Throw Missile at Rail Vehicle	24	35
<b>Total</b>	<b>207</b>	<b>130</b>
<b>Theft of passenger property</b>		
Theft Luggage	212	233
Theft Personal Property	1,270	1,489
Theft from the Person	674	793
<b>Total</b>	<b>2,156</b>	<b>2,515</b>
<b>Motor vehicle/cycle crime</b>		
Theft Motor Vehicle	122	148
Take Vehicle w/o Consent	10	4
Theft from Vehicle	95	112
Damage to Motor Vehicle	106	119
Theft/Damage Pedal Cycle offences	1,559	1,685
Interfere with Motor Vehicle	15	18
<b>Total</b>	<b>1,907</b>	<b>2,086</b>

## B Division East notifiable crimes

	2016/17	2017/18
	Recorded crimes	Recorded crimes
<b>Robbery</b>		
Robbery	70	121
Assault w/i to Rob	2	3
<b>Total</b>	<b>72</b>	<b>124</b>
<b>Theft of railway/commercial property and burglary</b>		
Burglary/Housebreaking Booking Office	6	8
Burglary-Housebreaking	60	94
Theft from Shop/Kiosk	771	865
Goods in Transit Offences	4	4
Theft from Vending Machines	21	46
Theft Undertaking Stores	31	41
Live Cable Theft	6	6
Non- Live Cable Theft	22	26
Other Theft/Burglary Offences	54	57
<b>Total</b>	<b>975</b>	<b>1,147</b>
<b>Public order</b>		
Public fear, alarm or distress	930	1,443
Racially or religiously aggravated public fear, alarm or distress	391	475
Bomb Hoax Offences	16	10
Other Public Order Offences	102	155
<b>Total</b>	<b>1,439</b>	<b>2,083</b>
<b>Fraud</b>		
Ticket Fraud	0	0
Forgery	30	28
Other Fraud	35	103
<b>Total</b>	<b>65</b>	<b>131</b>
<b>Drug crime</b>		
Trafficking in Controlled Drug	18	17
Possession of Controlled Drug	290	304
Proceeds of Crime (Drugs)	0	0
Other Drug Offences	0	0
<b>Total</b>	<b>308</b>	<b>321</b>
<b>Total other notifiable crime/offences</b>		
Handling/Reset	6	20
Other Firearms Offences	1	1
Proceeds of Crime (Exc Drugs)	5	5
Other Theft	43	87
Other Offences	81	92
<b>Total</b>	<b>136</b>	<b>205</b>
<b>Total notifiable crime/offences</b>	<b>9,747</b>	<b>12,197</b>



## B Division South notifiable crimes

	2016/17	2017/18
	Recorded crimes	Recorded crimes
<b>Violence against the person</b>		
Homicide	7	0
Attempted Murder	3	0
Serious Assault	605	696
Common Assault	1,501	1,850
Assault on Police	92	140
Firearms/Explosive Offences	3	3
Other Violence	175	242
<b>Total</b>	<b>2,386</b>	<b>2,931</b>
<b>Sexual crime</b>		
Sexual Offences against Females	208	232
Sexual Offences against Males	16	20
Exposure	48	67
Other sexual crime	132	185
<b>Total</b>	<b>404</b>	<b>504</b>
<b>Criminal damage/malicious mischief</b>		
Criminal Damage/Malicious Mischief	625	762
Arson/Fire-raising	30	37
Graffiti	893	1,144
Other Criminal Damage	4	5
<b>Total</b>	<b>1,552</b>	<b>1,948</b>
<b>Line of route crime</b>		
Destroy or Damage/Endanger Safety	44	31
Obstruction	193	98
Throw Missile at Rail Vehicle	41	74
<b>Total</b>	<b>278</b>	<b>203</b>
<b>Theft of passenger property</b>		
Theft Luggage	152	133
Theft Personal Property	1,531	1,444
Theft from the Person	822	668
<b>Total</b>	<b>2,505</b>	<b>2,245</b>
<b>Motor vehicle/cycle crime</b>		
Theft Motor Vehicle	117	123
Take Vehicle w/o Consent	4	9
Theft from Vehicle	173	154
Damage to Motor Vehicle	185	196
Theft/Damage Pedal Cycle offences	2,875	3,423
Interfere with Motor Vehicle	11	21
<b>Total</b>	<b>3,365</b>	<b>3,926</b>

## B Division South notifiable crimes

	2016/17	2017/18
	Recorded crimes	Recorded crimes
<b>Robbery</b>		
Robbery	99	159
Assault w/i to Rob	3	13
<b>Total</b>	<b>102</b>	<b>172</b>
<b>Theft of railway/commercial property and burglary</b>		
Burglary/Housebreaking Booking Office	21	13
Burglary-Housebreaking	90	140
Theft from Shop/Kiosk	554	530
Goods in Transit Offences	1	0
Theft from Vending Machines	110	92
Theft Undertaking Stores	37	43
Live Cable Theft	10	11
Non- Live Cable Theft	22	23
Other Theft/Burglary Offences	31	34
<b>Total</b>	<b>876</b>	<b>886</b>
<b>Public order</b>		
Public fear, alarm or distress	1,603	2,016
Racially or religiously aggravated public fear, alarm or distress	408	499
Bomb Hoax Offences	21	25
Other Public Order Offences	91	162
<b>Total</b>	<b>2,123</b>	<b>2,702</b>
<b>Fraud</b>		
Ticket Fraud	0	0
Forgery	19	48
Other Fraud	40	79
<b>Total</b>	<b>59</b>	<b>127</b>
<b>Drug crime</b>		
Trafficking in Controlled Drug	17	18
Possession of Controlled Drug	369	337
Proceeds of Crime (Drugs)	2	0
Other Drug Offences	2	0
<b>Total</b>	<b>390</b>	<b>355</b>
<b>Total other notifiable crime/offences</b>		
Handling/Reset	13	12
Other Firearms Offences	0	2
Proceeds of Crime (Exc Drugs)	1	7
Other Theft	76	110
Other Offences	167	90
<b>Total</b>	<b>257</b>	<b>221</b>
<b>Total notifiable crime/offences</b>	<b>14,297</b>	<b>16,220</b>

## B Division TfL notifiable crimes

	2016/17	2017/18
	Recorded crimes	Recorded crimes
<b>Violence against the person</b>		
Homicide	0	0
Attempted Murder	2	46
Serious Assault	526	679
Common Assault	1,636	1,986
Assault on Police	78	82
Firearms/Explosive Offences	6	3
Other Violence	104	146
<b>Total</b>	<b>2,352</b>	<b>2,942</b>
<b>Sexual crime</b>		
Sexual Offences against Females	726	759
Sexual Offences against Males	22	41
Exposure	66	65
Other sexual crime	218	212
<b>Total</b>	<b>1,032</b>	<b>1,077</b>
<b>Criminal damage/malicious mischief</b>		
Criminal Damage/Malicious Mischief	294	265
Arson/Fire-raising	1	7
Graffiti	708	705
Other Criminal Damage	2	5
<b>Total</b>	<b>1,005</b>	<b>982</b>
<b>Line of route crime</b>		
Destroy or Damage/Endanger Safety	16	14
Obstruction	47	28
Throw Missile at Rail Vehicle	16	16
<b>Total</b>	<b>79</b>	<b>58</b>
<b>Theft of passenger property</b>		
Theft Luggage	51	35
Theft Personal Property	1,223	1,361
Theft from the Person	2,627	3,482
<b>Total</b>	<b>3,901</b>	<b>4,878</b>
<b>Motor vehicle/cycle crime</b>		
Theft Motor Vehicle	13	7
Take Vehicle w/o Consent	2	0
Theft from Vehicle	81	43
Damage to Motor Vehicle	41	44
Theft/Damage Pedal Cycle offences	287	263
Interfere with Motor Vehicle	5	4
<b>Total</b>	<b>429</b>	<b>361</b>

## B Division TfL notifiable crimes

	2016/17	2017/18
	Recorded crimes	Recorded crimes
<b>Robbery</b>		
Robbery	95	153
Assault w/i to Rob	8	8
<b>Total</b>	<b>103</b>	<b>161</b>
<b>Theft of railway/commercial property and burglary</b>		
Burglary/Housebreaking Booking Office	1	4
Burglary-Housebreaking	30	33
Theft from Shop/Kiosk	49	86
Goods in Transit Offences	0	0
Theft from Vending Machines	23	42
Theft Undertaking Stores	31	26
Live Cable Theft	2	0
Non- Live Cable Theft	10	7
Other Theft/Burglary Offences	25	21
<b>Total</b>	<b>171</b>	<b>219</b>
<b>Public order</b>		
Public fear, alarm or distress	1,203	1,565
Racially or religiously aggravated public fear, alarm or distress	576	624
Bomb Hoax Offences	12	18
Other Public Order Offences	93	147
<b>Total</b>	<b>1,884</b>	<b>2,354</b>
<b>Fraud</b>		
Ticket Fraud	0	0
Forgery	2	5
Other Fraud	129	84
<b>Total</b>	<b>131</b>	<b>89</b>
<b>Drug crime</b>		
Trafficking in Controlled Drug	5	7
Possession of Controlled Drug	247	173
Proceeds of Crime (Drugs)	1	0
Other Drug Offences	0	0
<b>Total</b>	<b>253</b>	<b>180</b>
<b>Total other notifiable crimes</b>		
Handling/Reset	2	12
Other Firearms Offences	0	0
Proceeds of Crime (Exc Drugs)	0	0
Other Theft	48	63
Other Offences	20	23
<b>Total</b>	<b>70</b>	<b>98</b>
<b>Total notifiable crime/offences</b>	<b>11,410</b>	<b>13,399</b>

## C Division Midland notifiable crimes

	2016/17	2017/18
	Recorded crimes	Recorded crimes
<b>Violence against the person</b>		
Homicide	0	1
Attempted Murder	1	0
Serious Assault	146	143
Common Assault	367	502
Assault on Police	40	46
Firearms/Explosive Offences	3	1
Other Violence	51	80
<b>Total</b>	<b>608</b>	<b>773</b>
<b>Sexual crime</b>		
Sexual Offences against Females	50	64
Sexual Offences against Males	5	8
Exposure	15	19
Other sexual crime	36	31
<b>Total</b>	<b>106</b>	<b>122</b>
<b>Criminal damage/malicious mischief</b>		
Criminal Damage/Malicious Mischief	189	234
Arson/Fire-raising	8	18
Graffiti	173	214
Other Criminal Damage	0	3
<b>Total</b>	<b>370</b>	<b>469</b>
<b>Line of route crime</b>		
Destroy or Damage/Endanger Safety	29	21
Obstruction	191	83
Throw Missile at Rail Vehicle	31	39
<b>Total</b>	<b>251</b>	<b>143</b>
<b>Theft of passenger property</b>		
Theft Luggage	156	158
Theft Personal Property	488	535
Theft from the Person	139	149
<b>Total</b>	<b>783</b>	<b>842</b>
<b>Motor vehicle/cycle crime</b>		
Theft Motor Vehicle	28	69
Take Vehicle w/o Consent	1	7
Theft from Vehicle	86	112
Damage to Motor Vehicle	85	98
Theft/Damage Pedal Cycle offences	695	673
Interfere with Motor Vehicle	3	18
<b>Total</b>	<b>898</b>	<b>977</b>

## C Division Midland notifiable crimes

	2016/17	2017/18
	Recorded crimes	Recorded crimes
<b>Robbery</b>		
Robbery	25	41
Assault w/i to Rob	3	0
<b>Total</b>	<b>28</b>	<b>41</b>
<b>Theft of railway/commercial property and burglary</b>		
Burglary/Housebreaking Booking Office	6	9
Burglary-Housebreaking	33	43
Theft from Shop/Kiosk	182	214
Goods in Transit Offences	3	9
Theft from Vending Machines	24	25
Theft Undertaking Stores	37	37
Live Cable Theft	14	49
Non- Live Cable Theft	26	53
Other Theft/Burglary Offences	28	22
<b>Total</b>	<b>353</b>	<b>461</b>
<b>Public order</b>		
Public fear, alarm or distress	384	599
Racially or religiously aggravated public fear, alarm or distress	123	166
Bomb Hoax Offences	6	15
Other Public Order Offences	31	46
<b>Total</b>	<b>544</b>	<b>826</b>
<b>Fraud</b>		
Ticket Fraud	0	0
Forgery	3	6
Other Fraud	34	18
<b>Total</b>	<b>37</b>	<b>24</b>
<b>Drug crime</b>		
Trafficking in Controlled Drug	3	14
Possession of Controlled Drug	121	119
Proceeds of Crime (Drugs)	0	0
Other Drug Offences	0	0
<b>Total</b>	<b>124</b>	<b>133</b>
<b>Total other notifiable crimes</b>		
Handling/Reset	2	4
Other Firearms Offences	0	0
Proceeds of Crime (Exc Drugs)	3	1
Other Theft	36	42
Other Offences	59	43
<b>Total</b>	<b>100</b>	<b>90</b>
<b>Total notifiable crime/offences</b>	<b>4,202</b>	<b>4,901</b>

## C Division Pennine notifiable crimes

	2016/17	2017/18
	Recorded crimes	Recorded crimes
<b>Violence against the person</b>		
Homicide	0	1
Attempted Murder	0	0
Serious Assault	382	477
Common Assault	809	942
Assault on Police	106	99
Firearms/Explosive Offences	2	1
Other Violence	87	142
<b>Total</b>	<b>1,386</b>	<b>1,662</b>
<b>Sexual crime</b>		
Sexual Offences against Females	100	147
Sexual Offences against Males	11	20
Exposure	18	26
Other sexual crime	38	44
<b>Total</b>	<b>167</b>	<b>237</b>
<b>Criminal damage/malicious mischief</b>		
Criminal Damage/Malicious Mischief	358	445
Arson/Fire-raising	14	22
Graffiti	163	182
Other Criminal Damage	2	1
<b>Total</b>	<b>537</b>	<b>650</b>
<b>Line of route crime</b>		
Destroy or Damage/Endanger Safety	51	46
Obstruction	293	190
Throw Missile at Rail Vehicle	62	90
<b>Total</b>	<b>406</b>	<b>326</b>
<b>Theft of passenger property</b>		
Theft Luggage	251	313
Theft Personal Property	893	830
Theft from the Person	378	359
<b>Total</b>	<b>1,522</b>	<b>1,502</b>
<b>Motor vehicle/cycle crime</b>		
Theft Motor Vehicle	28	45
Take Vehicle w/o Consent	5	4
Theft from Vehicle	136	173
Damage to Motor Vehicle	104	152
Theft/Damage Pedal Cycle offences	521	508
Interfere with Motor Vehicle	8	18
<b>Total</b>	<b>802</b>	<b>900</b>



## C Division Pennine notifiable crimes

	2016/17	2017/18
	Recorded crimes	Recorded crimes
<b>Robbery</b>		
Robbery	27	32
Assault w/i to Rob	1	2
<b>Total</b>	<b>28</b>	<b>34</b>
<b>Theft of railway/commercial property and burglary</b>		
Burglary/Housebreaking Booking Office	12	9
Burglary-Housebreaking	109	116
Theft from Shop/Kiosk	681	780
Goods in Transit Offences	14	11
Theft from Vending Machines	17	31
Theft Undertaking Stores	54	53
Live Cable Theft	29	63
Non- Live Cable Theft	41	70
Other Theft/Burglary Offences	54	37
<b>Total</b>	<b>1,011</b>	<b>1,170</b>
<b>Public order</b>		
Public fear, alarm or distress	953	1,161
Racially or religiously aggravated public fear, alarm or distress	205	285
Bomb Hoax Offences	12	11
Other Public Order Offences	64	153
<b>Total</b>	<b>1,234</b>	<b>1,610</b>
<b>Fraud</b>		
Ticket Fraud	0	0
Forgery	3	10
Other Fraud	22	40
<b>Total</b>	<b>25</b>	<b>50</b>
<b>Drug crime</b>		
Trafficking in Controlled Drug	20	17
Possession of Controlled Drug	285	369
Proceeds of Crime (Drugs)	0	0
Other Drug Offences	0	0
<b>Total</b>	<b>305</b>	<b>386</b>
<b>Other notifiable crimes</b>		
Handling/Reset	7	7
Other Firearms Offences	0	0
Proceeds of Crime (Exc Drugs)	3	3
Other Theft	80	108
Other Offences	98	42
<b>Total</b>	<b>188</b>	<b>160</b>
<b>Total notifiable crime/offences</b>	<b>7,611</b>	<b>8,687</b>

## C Division Wales notifiable crimes

	2016/17	2017/18
	Recorded crimes	Recorded crimes
<b>Violence against the person</b>		
Homicide	0	0
Attempted Murder	0	0
Serious Assault	53	71
Common Assault	124	180
Assault on Police	17	16
Firearms/Explosive Offences	0	0
Other Violence	20	27
<b>Total</b>	<b>214</b>	<b>294</b>
<b>Sexual crime</b>		
Sexual Offences against Females	23	15
Sexual Offences against Males	0	0
Exposure	2	7
Other sexual crime	5	10
<b>Total</b>	<b>30</b>	<b>32</b>
<b>Criminal damage/malicious mischief</b>		
Criminal Damage/Malicious Mischief	85	82
Arson/Fire-raising	1	7
Graffiti	18	44
Other Criminal Damage	0	1
<b>Total</b>	<b>104</b>	<b>134</b>
<b>Line of route crime</b>		
Destroy or Damage/Endanger Safety	11	13
Obstruction	66	35
Throw Missile at Rail Vehicle	10	14
<b>Total</b>	<b>87</b>	<b>62</b>
<b>Theft of passenger property</b>		
Theft Luggage	48	48
Theft Personal Property	120	117
Theft from the Person	38	34
<b>Total</b>	<b>206</b>	<b>199</b>
<b>Motor vehicle/cycle crime</b>		
Theft Motor Vehicle	2	3
Take Vehicle w/o Consent	0	1
Theft from Vehicle	25	13
Damage to Motor Vehicle	27	28
Theft/Damage Pedal Cycle offences	79	75
Interfere with Motor Vehicle	0	2
<b>Total</b>	<b>133</b>	<b>122</b>

## C Division Wales notifiable crimes

	2016/17	2017/18
	Recorded crimes	Recorded crimes
<b>Robbery</b>		
Robbery	8	2
Assault w/i to Rob	0	0
<b>Total</b>	<b>8</b>	<b>2</b>
<b>Theft of railway/commercial property and burglary</b>		
Burglary/Housebreaking Booking Office	1	3
Burglary-Housebreaking	7	18
Theft from Shop/Kiosk	26	19
Goods in Transit Offences	1	0
Theft from Vending Machines	2	1
Theft Undertaking Stores	18	18
Live Cable Theft	12	16
Non- Live Cable Theft	16	37
Other Theft/Burglary Offences	8	16
<b>Total</b>	<b>91</b>	<b>128</b>
<b>Public order</b>		
Public fear, alarm or distress	169	251
Racially or religiously aggravated public fear, alarm or distress	11	28
Bomb Hoax Offences	1	2
Other Public Order Offences	19	27
<b>Total</b>	<b>200</b>	<b>308</b>
<b>Fraud</b>		
Ticket Fraud	0	0
Forgery	0	0
Other Fraud	8	3
<b>Total</b>	<b>8</b>	<b>3</b>
<b>Drug crime</b>		
Trafficking in Controlled Drug	3	5
Possession of Controlled Drug	64	49
Proceeds of Crime (Drugs)	0	0
Other Drug Offences	0	0
<b>Total</b>	<b>67</b>	<b>54</b>
<b>Total other notifiable crimes</b>		
Handling/Reset	2	0
Other Firearms Offences	0	0
Proceeds of Crime (Exc Drugs)	0	0
Other Theft	10	18
Other Offences	27	13
<b>Total</b>	<b>39</b>	<b>31</b>
<b>Total notifiable crime/offences</b>	<b>1,187</b>	<b>1,369</b>

## C Division Western notifiable crimes

	2016/17	2017/18
	Recorded crimes	Recorded crimes
<b>Violence against the person</b>		
Homicide	0	1
Attempted Murder	1	1
Serious Assault	65	89
Common Assault	176	231
Assault on Police	32	27
Firearms/Explosive Offences	1	1
Other Violence	31	37
<b>Total</b>	<b>306</b>	<b>387</b>
<b>Sexual crime</b>		
Sexual Offences against Females	41	30
Sexual Offences against Males	3	5
Exposure	4	10
Other sexual crime	13	26
<b>Total</b>	<b>61</b>	<b>71</b>
<b>Criminal damage/malicious mischief</b>		
Criminal Damage/Malicious Mischief	92	114
Arson/Fire-raising	5	6
Graffiti	32	67
Other Criminal Damage	0	3
<b>Total</b>	<b>129</b>	<b>190</b>
<b>Line of route crime</b>		
Destroy or Damage/Endanger Safety	6	4
Obstruction	79	31
Throw Missile at Rail Vehicle	7	13
<b>Total</b>	<b>92</b>	<b>48</b>
<b>Theft of passenger property</b>		
Theft Luggage	128	137
Theft Personal Property	340	329
Theft from the Person	51	77
<b>Total</b>	<b>519</b>	<b>543</b>
<b>Motor vehicle/cycle crime</b>		
Theft Motor Vehicle	9	23
Take Vehicle w/o Consent	3	2
Theft from Vehicle	20	31
Damage to Motor Vehicle	33	37
Theft/Damage Pedal Cycle offences	376	488
Interfere with Motor Vehicle	3	8
<b>Total</b>	<b>444</b>	<b>589</b>

## C Division Western notifiable crimes

	2016/17	2017/18
	Recorded crimes	Recorded crimes
<b>Robbery</b>		
Robbery	3	9
Assault w/i to Rob	0	0
<b>Total</b>	<b>3</b>	<b>9</b>
<b>Theft of railway/commercial property and burglary</b>		
Burglary/Housebreaking Booking Office	3	1
Burglary-Housebreaking	31	32
Theft from Shop/Kiosk	97	115
Goods in Transit Offences	0	0
Theft from Vending Machines	2	3
Theft Undertaking Stores	11	9
Live Cable Theft	2	6
Non- Live Cable Theft	24	32
Other Theft/Burglary Offences	17	13
<b>Total</b>	<b>187</b>	<b>211</b>
<b>Public order</b>		
Public fear, alarm or distress	211	316
Racially or religiously aggravated public fear, alarm or distress	44	59
Bomb Hoax Offences	2	2
Other Public Order Offences	18	23
<b>Total</b>	<b>275</b>	<b>400</b>
<b>Fraud</b>		
Ticket Fraud	0	0
Forgery	0	0
Other Fraud	7	11
<b>Total</b>	<b>7</b>	<b>11</b>
<b>Drug crime</b>		
Trafficking in Controlled Drug	6	5
Possession of Controlled Drug	68	84
Proceeds of Crime (Drugs)	0	0
Other Drug Offences	0	0
<b>Total</b>	<b>74</b>	<b>89</b>
<b>Total other notifiable crimes</b>		
Handling/Reset	1	4
Other Firearms Offences	1	1
Proceeds of Crime (Exc Drugs)	0	1
Other Theft	21	31
Other Offences	34	10
Total	57	47
<b>Total notifiable crimes</b>	<b>2,154</b>	<b>2,595</b>

## D Division crimes

	2016/17	2017/18
	Recorded crimes	Recorded crimes
<b>Violence against the person</b>		
Homicide	0	0
Attempted Murder	0	0
Serious Assault	17	18
Common Assault	342	337
Assault on Police	34	35
Firearms/Explosive Offences	7	36
Other Violence	38	36
<b>Total</b>	<b>438</b>	<b>462</b>
<b>Sexual crime</b>		
Sexual Offences against Females	19	23
Sexual Offences against Males	2	2
Exposure	5	12
Other sexual crime	20	20
<b>Total</b>	<b>46</b>	<b>57</b>
<b>Criminal damage/malicious mischief</b>		
Criminal Damage/Malicious Mischief	142	204
Arson/Fire-raising	8	25
Graffiti	63	80
Other Criminal Damage	7	5
<b>Total</b>	<b>220</b>	<b>314</b>
<b>Line of route crime</b>		
Destroy or Damage/Endanger Safety	29	31
Obstruction	13	11
Throw Missile at Rail Vehicle	43	35
<b>Total</b>	<b>85</b>	<b>77</b>
<b>Theft of passenger property</b>		
Theft Luggage	37	45
Theft Personal Property	171	191
Theft from the Person	44	46
<b>Total</b>	<b>252</b>	<b>282</b>
<b>Motor vehicle/cycle crime</b>		
Theft Motor Vehicle	2	5
Take Vehicle w/o Consent	3	3
Theft from Vehicle	12	13
Damage to Motor Vehicle	28	42
Theft/Damage Pedal Cycle offences	66	116
Interfere with Motor Vehicle	0	0
<b>Total</b>	<b>111</b>	<b>179</b>

## D Division crimes

	2016/17	2017/18
	Recorded crimes	Recorded crimes
<b>Robbery</b>		
Robbery	12	5
Assault w/i to Rob	6	5
<b>Total</b>	<b>18</b>	<b>10</b>
<b>Theft of railway/commercial property and burglary</b>		
Burglary/Housebreaking Booking Office	0	0
Burglary-Housebreaking	23	29
Theft from Shop/Kiosk	127	83
Goods in Transit Offences	1	4
Theft from Vending Machines	0	0
Theft Undertaking Stores	36	25
Live Cable Theft	10	7
Non- Live Cable Theft	11	17
Other Theft/Burglary Offences	16	10
<b>Total</b>	<b>224</b>	<b>175</b>
<b>Public order</b>		
Public fear, alarm or distress	0	0
Racially or religiously aggravated public fear, alarm or distress	13	29
Bomb Hoax Offences	1	0
Other Public Order Offences	0	1
<b>Total</b>	<b>14</b>	<b>30</b>
<b>Fraud</b>		
Ticket Fraud	2	3
Forgery	7	5
Other Fraud	12	11
<b>Total</b>	<b>21</b>	<b>19</b>
<b>Drug crime</b>		
Trafficking in Controlled Drug	5	8
Possession of Controlled Drug	74	87
Proceeds of Crime (Drugs)	0	0
Other Drug Offences	1	1
<b>Total</b>	<b>80</b>	<b>96</b>
<b>Total other notifiable crimes</b>		
Handling/Reset	5	1
Other Firearms Offences	0	0
Proceeds of Crime (Exc Drugs)	0	0
Other Theft	69	50
Other Offences	44	39
<b>Total</b>	<b>118</b>	<b>90</b>
<b>Total notifiable crime/offences</b>	<b>1,627</b>	<b>1,791</b>



## Miscellaneous statistics

### Notifiable crimes (England and Wales)/crimes (Scotland)

The total number of notifiable offences in England & Wales and crimes in Scotland recorded by BTP in 2017/18 was 61,159 compared to 52,235 in 2016-17. This was an increase of 17.1%.

Reported crimes fell into the following categories in 2017/18:

BTP Crime Group	Force total	% of total
Violence against the person offences	11,711	19.1%
Sexual offences	2,472	4.0%
Criminal damage offences	5,510	9.0%
Line of route offences	1,047	1.7%
Theft of Passenger Property	13,006	21.3%
Motor vehicle / cycle offences	9,140	14.9%
Robbery offences	553	0.9%
Theft of railway/commercial property & burglary offences	4,397	7.2%
Serious public order offences	10,313	16.9%
Serious fraud offences	454	0.7%
Drug offences	1,614	2.6%
Other serious notifiable offences	942	1.5%
<b>Total notifiable offences</b>	<b>61,159</b>	<b>100%</b>

### Notifiable offences/crimes by subdivision

Subdivision	Recorded
B Division East	12,197
B Division South	16,220
B Division TfL	13,399
C Division Midland	4,901
C Division Pennine	8,687
C Division Wales	1,369
C Division Western	2,595
D Division	1,791
<b>Force total</b>	<b>61,159</b>

# Financial results 2017/18

Figures are in thousands £000

	Year ended 31/03/18	Year ended 31/03/17
<b>Expenditure</b>	<b>£000</b>	<b>£000</b>
Staff pay	(284,254)	(263,360)
Premises related costs	(17,192)	(17,723)
Communications/computers	(12,449)	(12,265)
Transport costs	(5,279)	(4,106)
Suppliers and services	(16,676)	(14,463)
Depreciation and capital costs	(13,812)	(13,376)
<b>Total expenditure</b>	<b>(349,662)</b>	<b>(325,293)</b>
<b>Funded by</b>		
Train operating companies (inc Network Rail)	229,977	208,614
London underground	41,556	61,515
Ad hoc income	22,025	20,550
<b>Total income</b>	<b>293,558</b>	<b>290,679</b>
<b>Interest</b>		
Interest receivable	34	25
Net interest payable on pension scheme	(19,100)	(17,300)
<b>Surplus / (deficit)</b>	<b>(75,170)</b>	<b>(51,889)</b>
<b>Adjustments to deficit/(surplus)</b>		
Actuarial gains / (losses)	126,570	(235,030)
Revaluation assets gains/ (losses)	731	871
<b>Total surplus/(deficit) for the year</b>	<b>52,131</b>	<b>(286,048)</b>

**British Transport Police**

and the British Transport Police Authority  
welcome your feedback.

If you would like to contact us, please write to:  
British Transport Police  
25 Camden Road  
London  
NW1 9LN

Or email  
[general.enquiries@btp.pnn.police.uk](mailto:general.enquiries@btp.pnn.police.uk)

Find out more about BTP  
[btp.police.uk](http://btp.police.uk)

To contact British Transport Police Authority, please write to:  
British Transport Police Authority  
The Forum  
5th Floor North  
74-80 Camden Street  
London  
NW1 0EG

Or email  
[general.enquiries@btpa.police.uk](mailto:general.enquiries@btpa.police.uk)



[btp.police.uk](http://btp.police.uk)  
0800 40 50 40